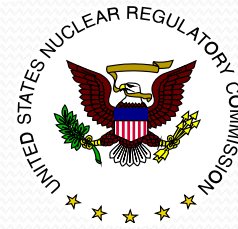
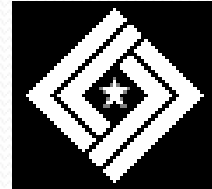
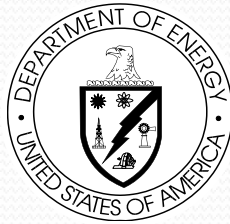
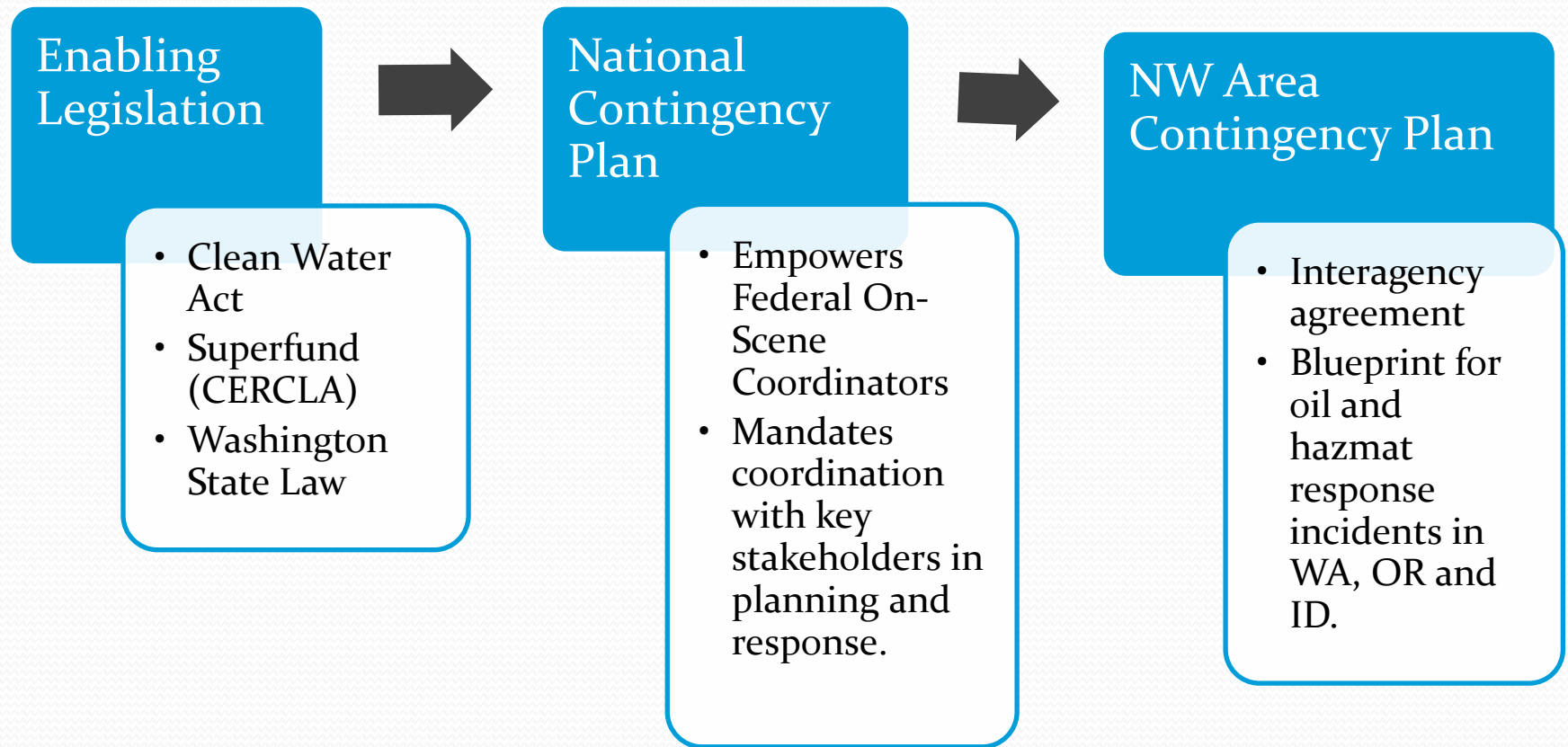


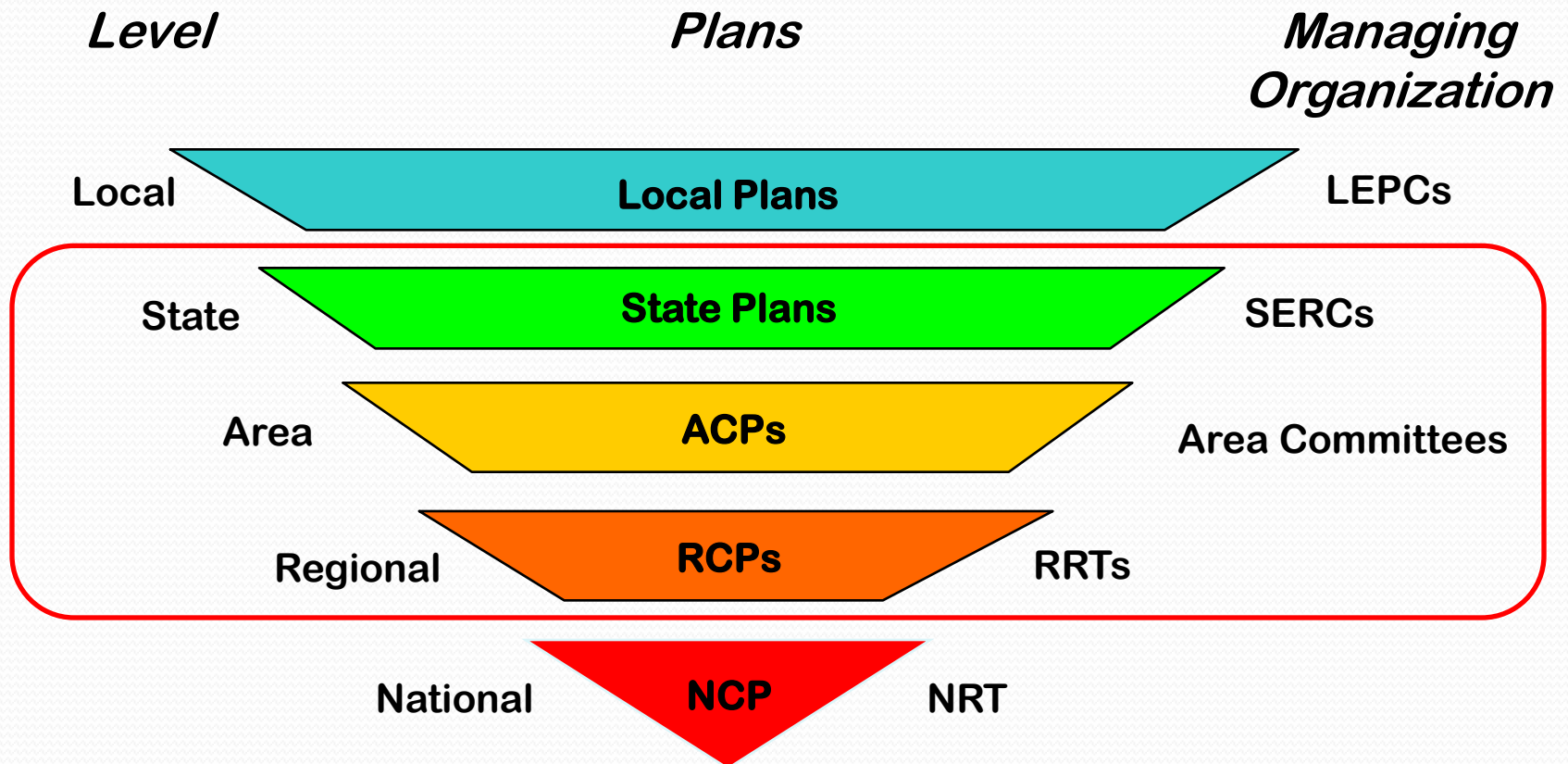
# Oil/Hazardous Material Response in the Northwest



# National Response System



# NRS Planning Framework



# NW Area Contingency Plan

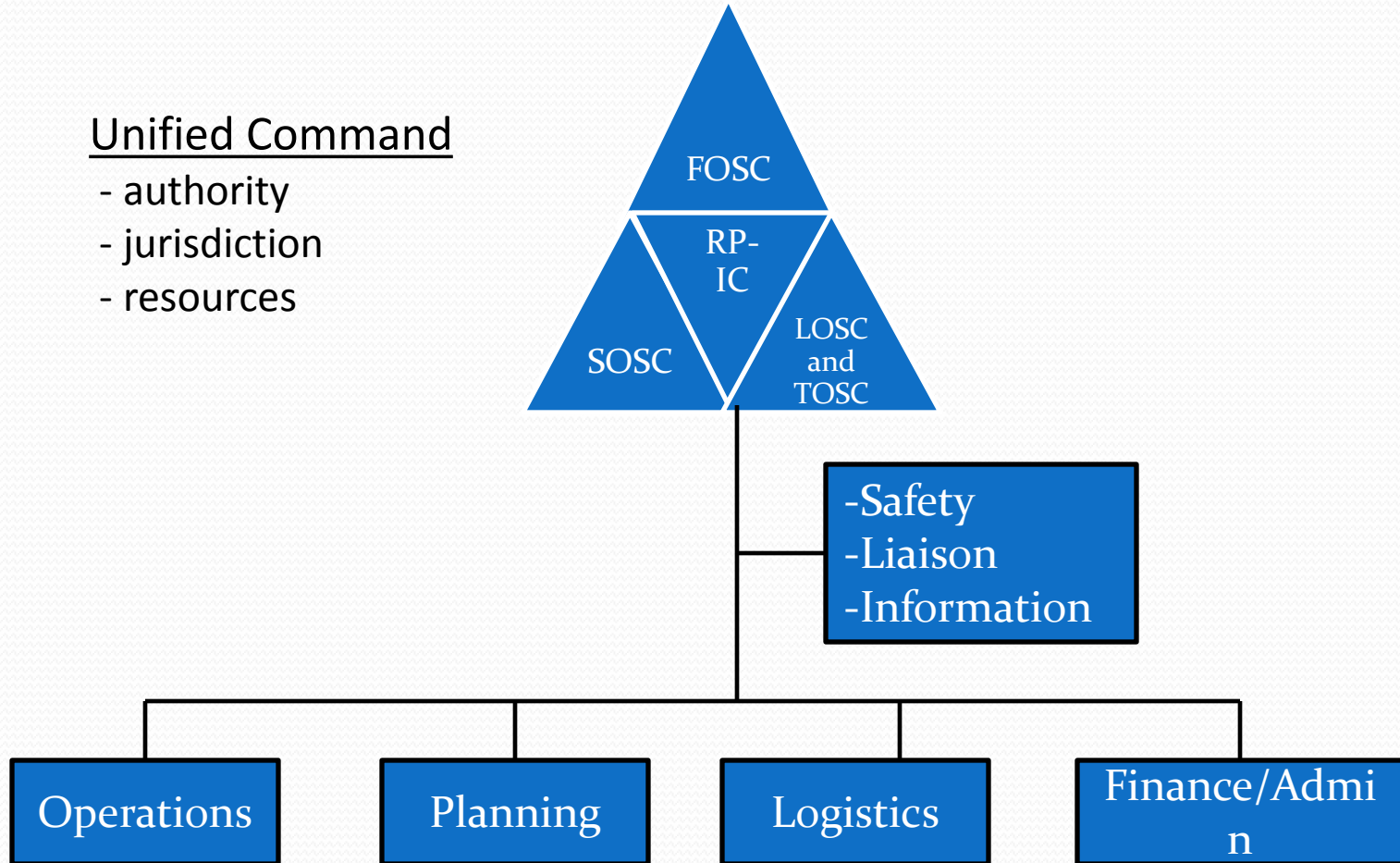
- Master Oil and Hazardous Substance Response Plan for State/Federal Agencies
- Authorities, Jurisdiction, Policies, Procedures
- Tools, Templates, Forms, BMPs, Permits, etc.
  - JIC Manual
  - Safety Plan Template
  - Job Aids
- Response Strategies



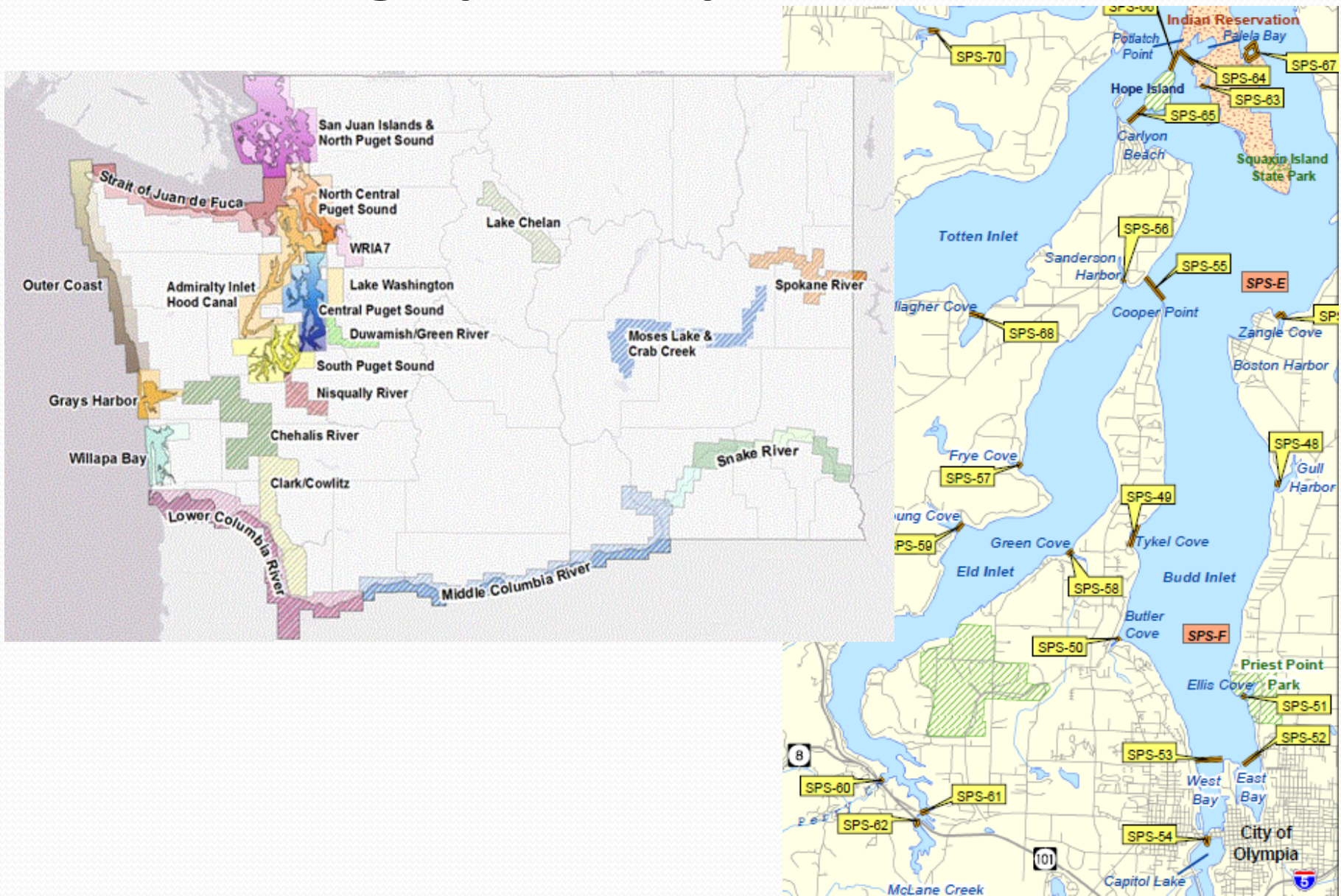
# Oil/Hazmat Incident Management

## Unified Command

- authority
- jurisdiction
- resources



# Geographic Response Plans



# Response Strategies "2-Pagers"

NISQUALLY RIVER GRP

SEPTEMBER 2015

## Castle Lane SE

NR-30.7

**Position - Location:** 46° 51' 9.23", -122° 28' 18.6" 46° 51' 55.4", -122° 28' 11.1" 46.86538, -122.46976 Yelm

**Strategy Objective:** Collection : Collect and recover oil on river left

**Implementation:** Secure end of 400ft hard boom to bank on river right at/near Point C (46.86501, -122.4703). Attach lateral shoreside anchor lines to boom at intervals of 100ft to 200ft, depending on stream flow conditions. Use jet-boat launched from site to transport remaining boom end and all lateral lines destined for river right upstream and across to river right. Secure boom end to bank at/near Point D. Secure lateral anchor lines to banks on river right and left; adjust as needed. Deploy second 400ft length hard boom in same manner between Points A & B, about 50ft downstream from first section of boom.

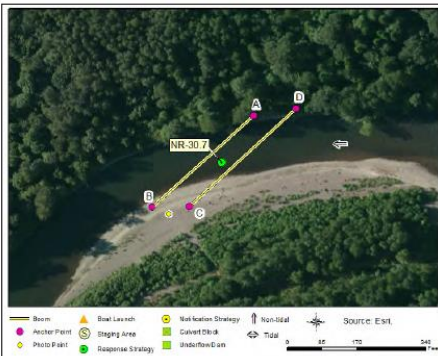
**Staging Area:** Onsite: Stage onsite at private access road. Launch workboat from site.

**Site Safety:** Slips, trips, and falls. Swift current and potential snags and submerged debris.

**Field Notes:** River access through private property on Castle Lane SE. Make contact with on-site property owners before accessing property. Vac-truck or skimmer/storage collection at Point B.

**Watercourse:** River - Below a Dam - Nisqually River

**Resources at Risk:** Downstream Resources

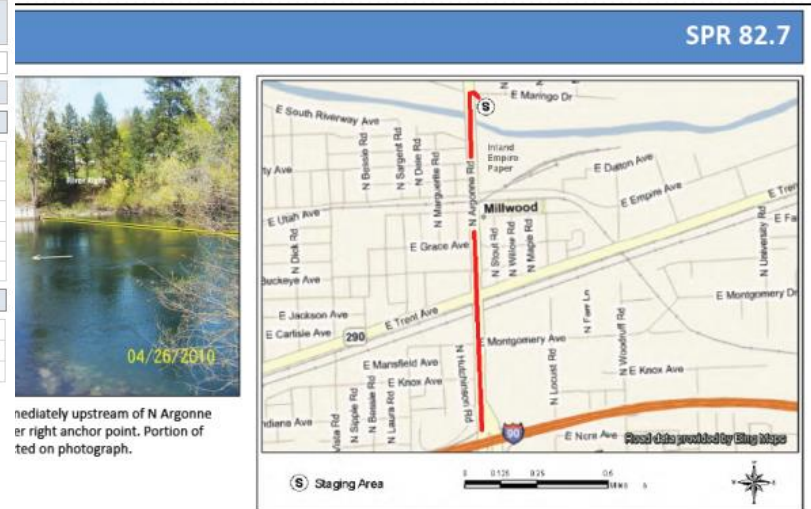


### Recommended Equipment

10 Each	Anchoring System(s) - Shoreside
1000 Feet	Boom - B3 (River Boom) or equivalent
500 Feet	Line - 1/2" poly line
1000 Feet	Line - 3/8" poly line
1 Each	Vac Truck or Skimmer and Storage
1 Each	Winch - Power Winch
1 Each	Workboat(s) - (jet drive)

### Recommended Personnel

1	Boat Operator
3	Laborer
1	Supervisor



mediately upstream of N Argonne or right anchor point. Portion of ted on photograph.

### Site Contact Information

Inland Empire Paper Company  
 Ph: 509-924-1911 (Shift Supervisor)  
 Fax: 509-927-8461  
 Email: iep@iepc.com

### Closest Address

9100 E Maringo Drive  
 Spokane, WA 99206

### Driving Directions

- Take Exit 287 on Interstate 90 in Spokane Valley, WA
- Travel North on North Argonne Road for 1.1 Miles
- Turn into empty lot on SE corner of N Argonne Road and E Maringo Drive
- Stage equipment in empty lot. Notify Inland Empire Paper Company; the property owner

# Response Partner Resources





# Western Response Resource List



# Industry Drill Program

- Contingency Plans
- Response Contractor Equipment
- NW Area Contingency Plan
- Geographic Response Plans

