



# CITY OF SEATTLE DISASTER RECOVERY PLAN

## About the Project

- *How will the Seattle community handle short- and long-term recovery efforts after a disaster?*
- *How can we return our economy, education system, social service network, and other vital aspects of our community to full functioning?*
- *How can we use a disaster as an opportunity to rebuild our community better than it was before?*
- *Who is responsible for making such decisions and with whose input? How and when will they be made?*

The City of Seattle Office of Emergency Management (OEM) is embarking on a new phase of planning for all-hazards disaster recovery that will address questions such as those above. The objective is to increase the community's resilience to the impacts of a major earthquake or other disaster, and for the City, its partners, and community members to be better prepared to manage recovery and redevelopment in the days, months, and years following a disaster and immediate response efforts. The project prioritizes two outcomes:

1. A **Disaster Recovery Plan** will address short- and long-term recovery priorities and provide guidance for the restoration of critical community functions, public services, vital resources, facilities, programs, and infrastructure. The Plan will establish a common playbook and menu of pre-considered options to support effective, efficient, and agile recovery efforts, identifying what efforts and investments will be needed to repair, reconstruct, rebuild, and reconstitute the essential segments of the community. It will prepare key stakeholders from the public, non-profit, and private sectors to work together, with clear roles, responsibilities, and decision-making processes.
2. The **Disaster Recovery Task Force** will provide guidance and resources for short- and long-term recovery efforts. Composed of representatives of government, business, non-profit organizations, and others, the Task Force will meet on an ongoing basis to maintain a current view of recovery priorities and to ensure the group is ready to provide expert advice in a coordinated fashion when a disaster strikes.

The planning process, the Disaster Recovery Plan, and the ongoing work of the Task Force will build the relationships, common understanding, and expertise that will be needed to recover in a way that builds a more resilient infrastructure and a more resilient community.

### Building on Phase 1 Work

In developing the Disaster Recovery Plan, the City is building on the groundwork established in the Phase 1 effort, completed in 2012, that included the identification of Core Values, recovery issues and related key policy options and stakeholder groups, decision-making processes, best practices and a draft outline for the full recovery plan. The following Core Values were developed through four community and stakeholder workshops and will serve as important guidelines for the development of Seattle's Disaster Recovery Plan:

- Innovation
- Equity and Diversity
- Independence and Individuality
- Civil Rights and Liberties
- Participation and Communication
- Neighborhood Ownership
- Environmental Quality
- Economic Vitality
- Mobility
- Resilience and Sustainability

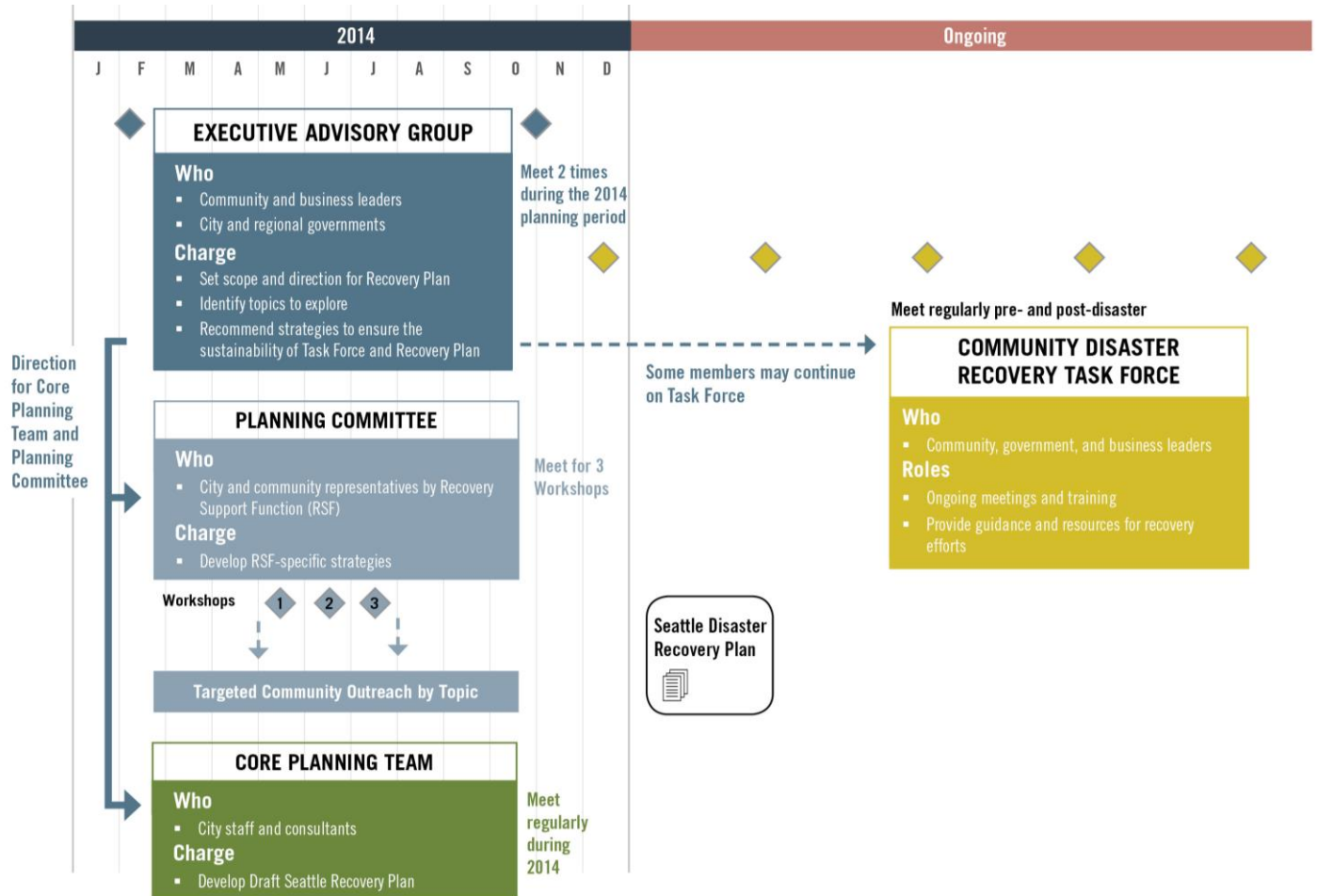
## PROJECT PROCESS AND TIMEFRAME

**Planning Bodies.** The Executive Advisory Group and Disaster Recovery Planning Committee are composed of City and community representatives charged with 1) recommending the composition and governance structure of a standing Disaster Recovery Task Force; and 2) developing the Disaster Recovery Plan.

- The **Executive Advisory Group** has met once, establishing scope and guidance for the more detailed planning process being undertaken by the Planning Committee.
- The **Planning Committee** of more than 60 representatives of specific disciplines and subject matter areas will meet for three planning workshops to develop topic-specific strategies. Meeting one has taken place, and meetings 2 and 3 are slated for mid-June and mid-July 2014.
- Composed of City and consultant staff, the **Core Planning Team** provides coordination and Plan writing support.

**Stakeholder Engagement and Plan Development.** Over the course of 2014, a wide variety of community stakeholders and subject matter experts will be engaged around topic-specific issues. The results of these conversations will be reported to the Core Planning Team and Planning Committee for incorporation in the overall Disaster Recovery Plan, which will be reviewed by the Executive Advisory Group.

**Standing Task Force.** Once the Disaster Recovery Plan is adopted and the Community Recovery Task Force established, the Task Force will meet on a regular basis to continue to advance the plans, policies, and relationships that will allow the Seattle community to recover effectively from a disaster.



## Project Management

The project is managed by the Seattle Office of Emergency Management and implemented with the assistance of a consulting team consisting of BERK, the Pacific Northwest Economic Region (PNWER), and K-Rise Enterprises. For more information, please contact Erika Lund, Seattle Office of Emergency Management, at 206-233-5089 or [erika.lund@seattle.gov](mailto:erika.lund@seattle.gov).